



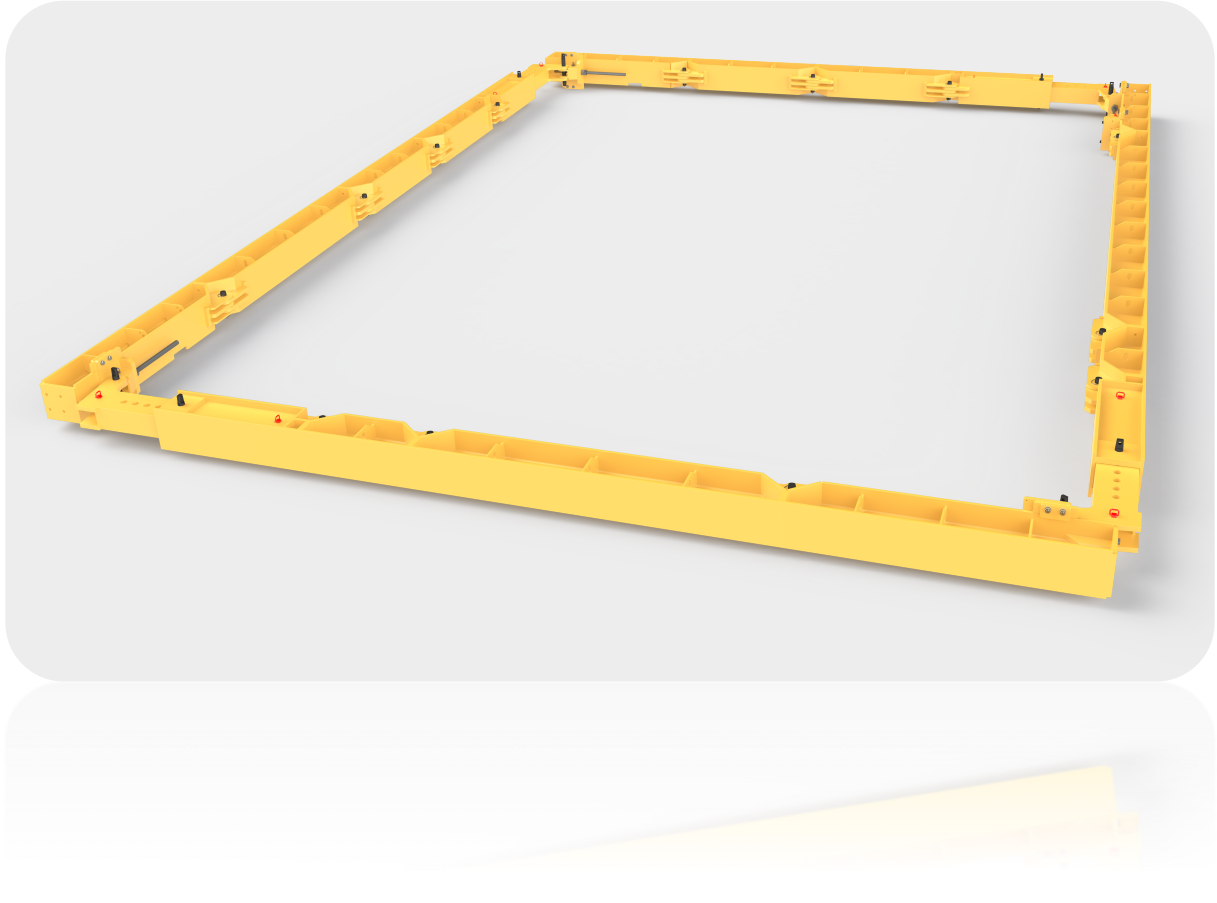
Description

The Meever Series bracing is very easy and straightforward to assemble, very adaptable, modular hydraulic bracing system that has interchangeable extension modules in various lengths. The 400 Series can be used with heavy duty steel trench sheets or sheet piles to support excavations of various size and depths. The 400 Series extension modules have built in shear stops to incorporate the use of knee braces and cross bracing. The 400 Series Bracing is recommended for excavations from 2.55m to 16.7m and is normally assembled and installed within the excavation using either excavators or cranes. Bigger sizes of excavations can be braced using this system with intermediate bracing struts such as the MB 300, MB 600 and MB 1000 Bracing Strut.

Fabricated from grade S460 UC steel sections the extension modules are quickly assembled into brace legs using simple pin and retaining clip / bolt and nut assemblies. Each leg contains a double acting hydraulic ram & Mechanical Unit which gives 850mm of stroke. These are joined together at corners to form frames with a simple pin and retaining clip. Extending the rams with the Meever Power Pack and hydraulic jack allows the leg lengths to be easily adjusted to suit the excavation sizes. Lifting and restraining points are provided on each leg to allow the assembly / removal of the brace to be secure and safe. Meever can supply a full range of suitable lifting and restraining chains,

Product Notes

- Hydraulic brace is very heavy and should only be assembled, installed and removed by competent persons and as per the installation instructions. When assembling on site ensure that all pins and retaining clips are in place and secured and all bolts are installed and fully tightened with a minimum two threads visible beyond the nut.
- Hanging chains are connected to the trench sheets and attached to the brace to help with installation / extraction of the brace and to support at all times. All the hanging chains should be connected every 3 mtr and adjusted to ensure the brace is vertical. Hanging chains should never be used for lifting.
- Always visually inspect the brace before installation for damage.
- The brace should always be installed square and vertical to the excavation walls and to check that there is contact with all the inward facing trench sheet. If this is not possible any gaps must be securely packed by using hardwood wedges.
- Safe access and edge protection (for personnel) and barrier protection (for plant) should always be considered.
- Prior to removal of systems all hydraulic rams must be released and retracted to avoid the need for excessive extraction forces and to avoid damaging corner joints.
- No matter how much care is taken during the installation and removal of hydraulic bracing systems some ground movement will occur in the areas immediately surrounding the excavation. Great care must be taken when specifying these systems for use adjacent to existing structures and services.



Excavation works must be planned before work starts on site and assessment of risk and hazards must be done.

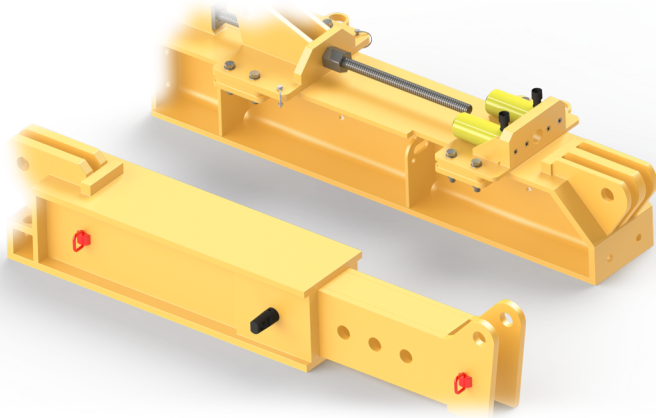
Due to high loadings used with this equipment, all application bracing systems should be approved by a competent.

All personnel engaged in application of supporting system must be previously briefed and supervised by competent person.

All lengths of extension are given as pin to pin.

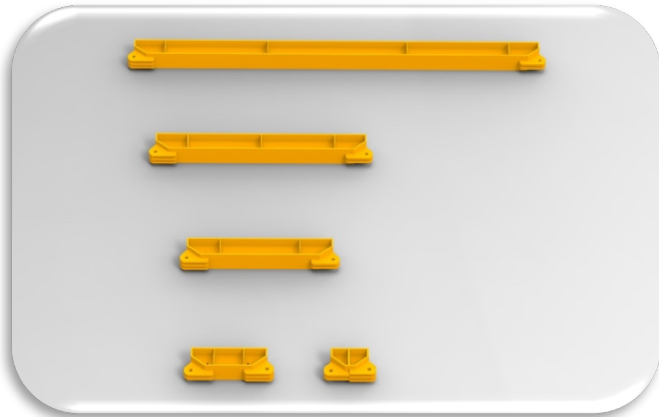
Extendable ram section is powered with 700 bar hydraulic jack by hydraulic hoses.

Mechanism and automation control of extendable ram section is powered by safe 24V voltage



Description	Product No:	Weight (kg)
400 Series Hydraulic Unit	0401	
400 Series Mechanical Unit	0401	900

Meever 400 Series consists of several different beams at different lengths. These being 0.5mtr, 1.0mtr, 2.0mtr, 3.0mtr & 6.0mtr.

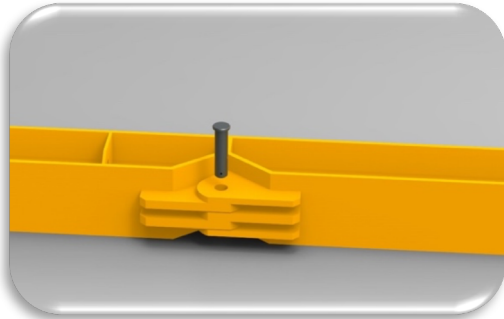


Description	Product No:	Weight (kg)
400 Series 0.5mtr Extension	0405	162
400 Series 1.0mtr Extension	0401	325
400 Series 2.0mtr Extension	0420	524
400 Series 3.0mtr Extension	0430	723
400 Series 6.0mtr Extension	0460	1334



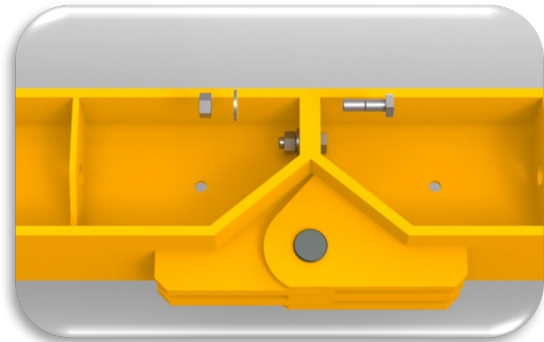
MEEVER BRACING

Gorinchemsestraat 37 | 4231 BE Meerkkerk | The Netherlands
T +31 183 358390 | E info@meeverbracing.com | I www.meeverbracing.com



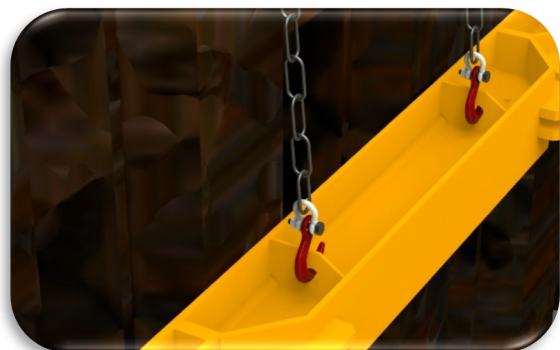
50mm diameter pins are used to connect selected extensions and hydraulic units into the frame.

All sections are connected with a 50mm dia Grade 50 pin and a safety clip. Then secured with nuts & bolts.

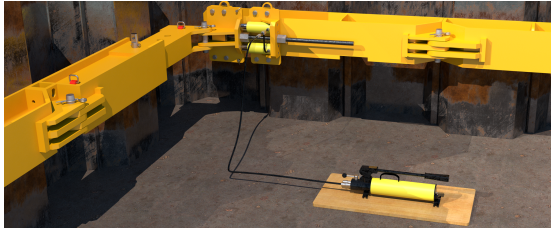


Lifting points to ensure safe connection while moving the selected extension or hydraulic unit.

Connection points to secure restraint chains to ensure the brace is secured safely within the excavation.



MEEVER BRACING 400 SERIES

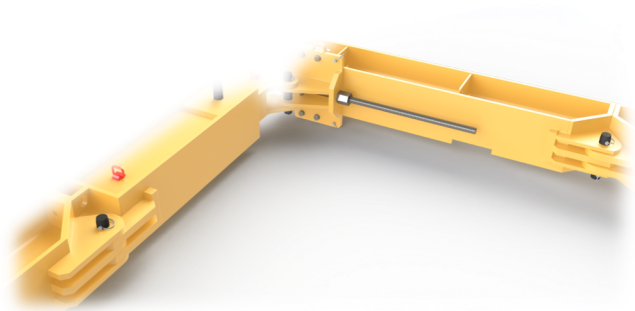


The Hydraulic Jack comes with a 700 bar hand pump.

Description	Product No:	Weight (kg)
Hydraulic Jack	0101	85
Hand Pump	0101	15

The brace is normally connected and installed at 90° to each other.

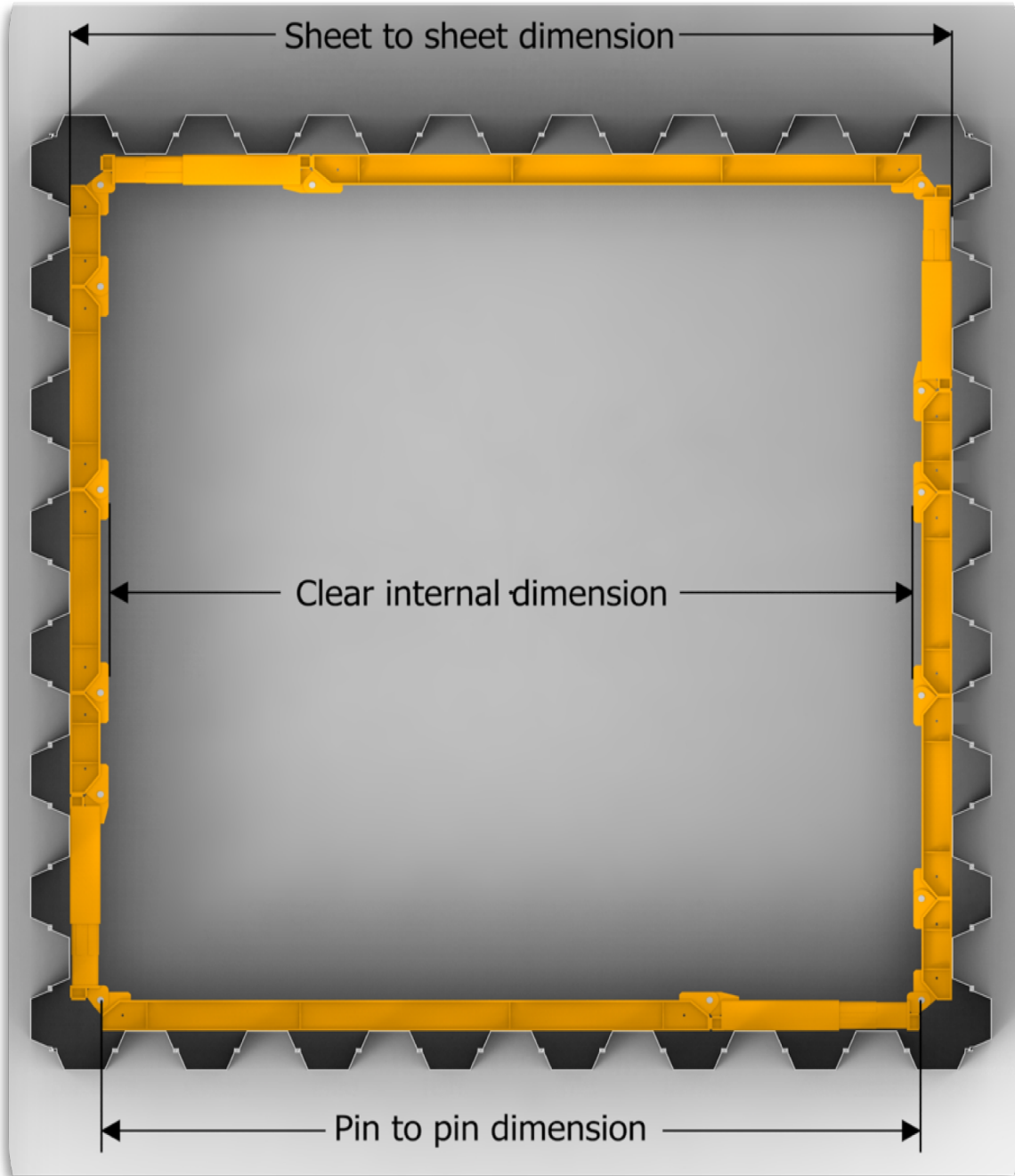
Corners should be packed out with hardwood wedges to ensure brace has an even load.





MEEVER BRACING

Gorinchemsestraat 37 | 4231 BE Meerkerk | The Netherlands
T +31 183 358390 | E info@meeverbracing.com | I www.meeverbracing.com



MEEVER BRACING 400 SERIES



400 SERIES BRACING

Hydraulic Unit	0.5 mtr Ext	1.0 mtr Ext	2.0 mtr Ext	3.0 mtr Ext	6.0 mtr Ext	Sheet to Sheet		Clear Opening	
						Min (mm)	Max (mm)	Min (mm)	Max (mm)
1,600 kg	162 kg	325 kg	524 kg	723 kg	1334 kg				
1						4,460	5,450	3,450	4,706
1	1					4,960	5,950	4,216	5,206
1		1				5,460	6,450	4,716	5,706
1	1	1				5,960	6,950	5,216	6,206
1			1			6,460	7,450	5,716	6,706
1	1		1			6,960	7,950	6,216	7,206
1				1		7,460	8,450	6,716	7,706
1	1			1		7,960	8,950	7,216	8,206
1		1		1		8,460	9,450	7,716	8,706
1	1	1		1		8,960	9,950	8,216	9,206
1			1	1		9,460	10,450	8,716	9,706
1	1		1	1		9,960	10,950	9,216	10,206
1					1	10,460	11,450	9,716	10,706
1	1				1	10,960	11,950	10,216	11,206
1		1			1	11,460	12,450	10,716	11,706
1	1	1			1	11,960	12,950	11,216	12,206
1			1		1	12,460	13,450	11,716	12,706
1	1		1		1	12,960	13,950	12,216	13,206
1				1	1	13,460	14,450	12,716	13,706
1	1			1	1	13,960	14,950	13,216	14,206
1				2	1	14,460	15,450	13,716	14,706
1	1			2	1	14,960	15,950	14,216	15,206
1		1		1	1	15,460	16,450	14,716	15,706
1	1		1	1	1	15,960	16,950	15,216	16,206
1					2	16,460	17,450	15,716	16,706
1	1				2	16,960	17,950	16,216	17,206
1		1			2	17,460	18,450	16,716	17,706
1	1	1			2	17,960	18,950	17,216	18,206

Loading chart curve for Brace 400 acc. to EN 14653

